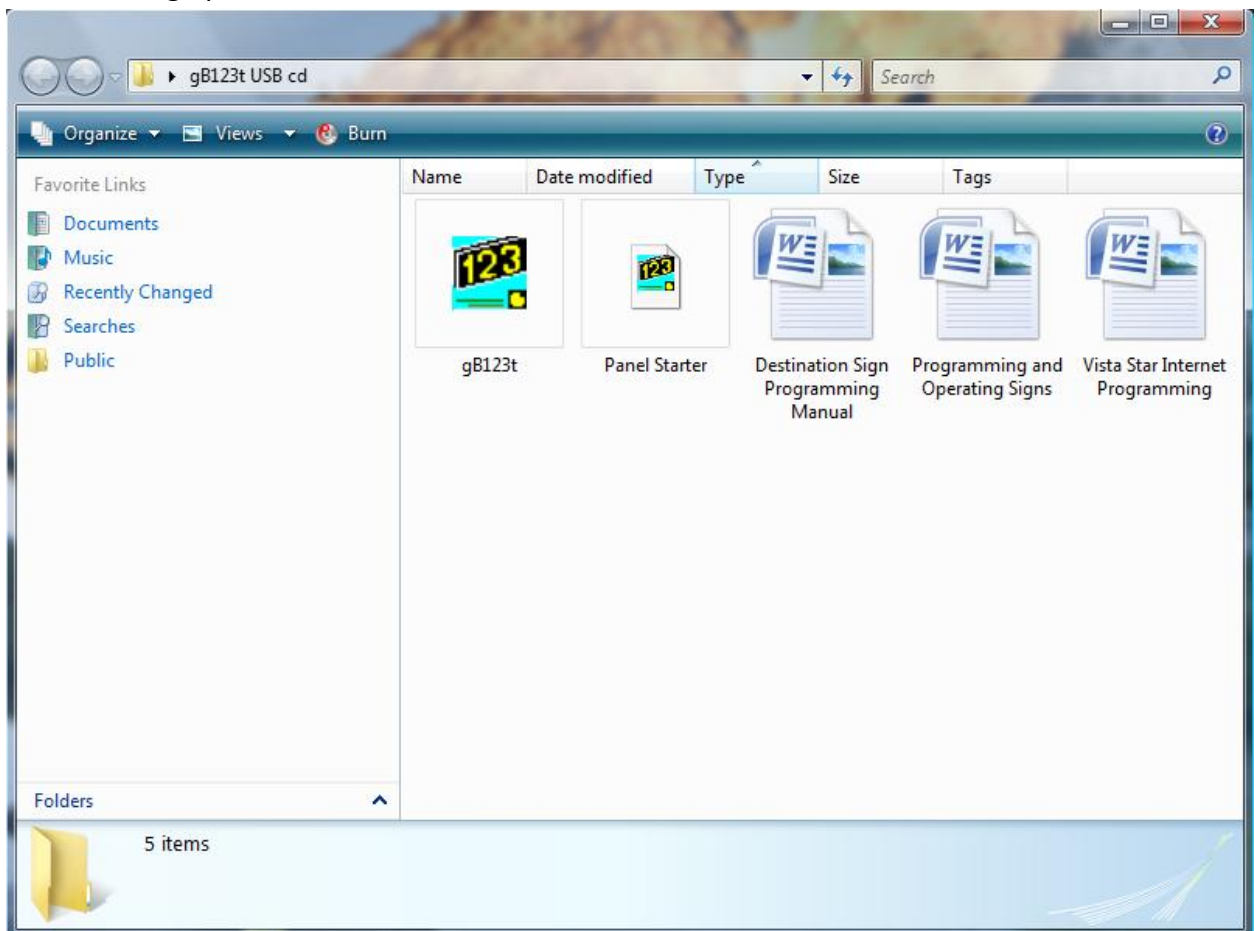


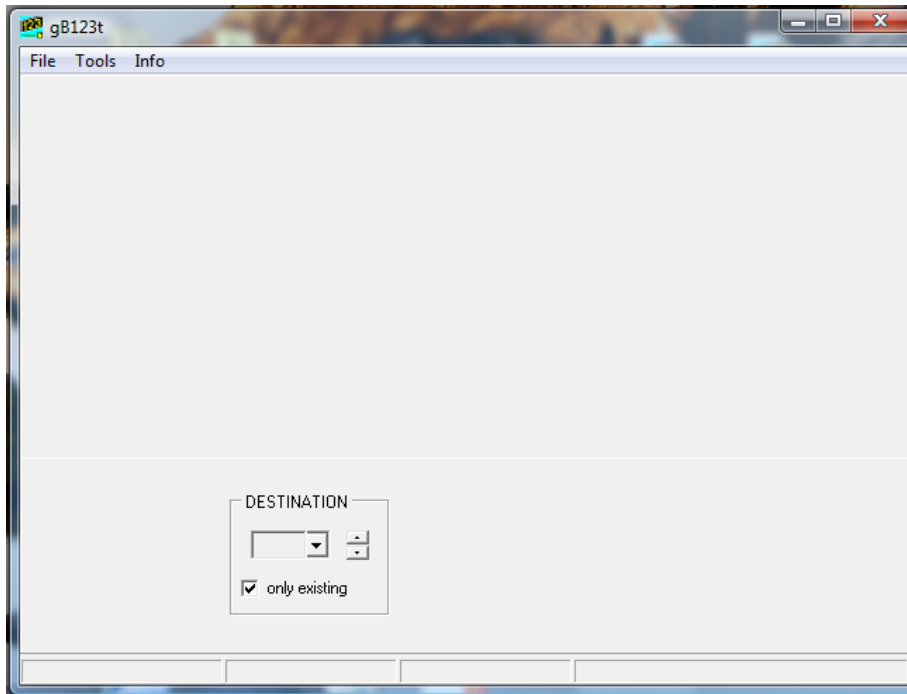
## Vista Star Destination Sign Programming Manual



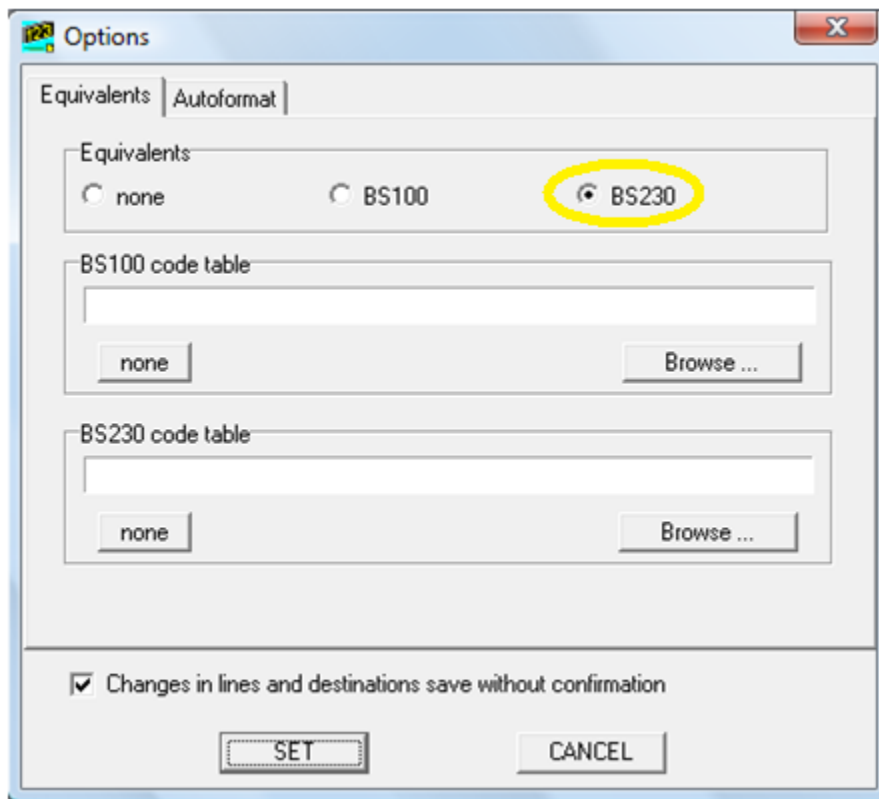
1. Insert your “gb123t” CD into your computer that has been supplied by Transign LLC.
2. Depending on your computer the auto play option may pop up in which you would select “open folder to view files,” and click OK, which in this case you would skip steps 3 and 4. If not continue to step 3.
3. Go to the start menu on your desktop and select My Computer out of the list to the right.
4. Double click your CD-ROM drive out of the listed devices on your computer.
5. This will bring up this view which shows the contents of the CD.



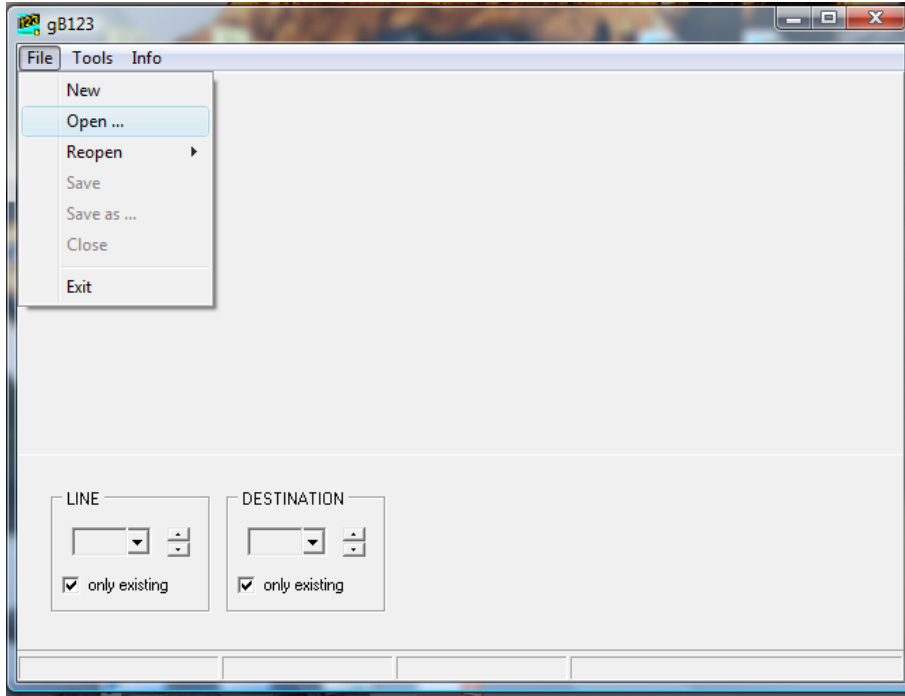
6. Notice there are five files shown on the screen, gB123t is the program used to edit, panelstarter is for starting a new program, plus three manuals for operation. To edit the destinations in your sign, Double click the gB123t file which will open the program used to edit your destinations. The screen below will appear.



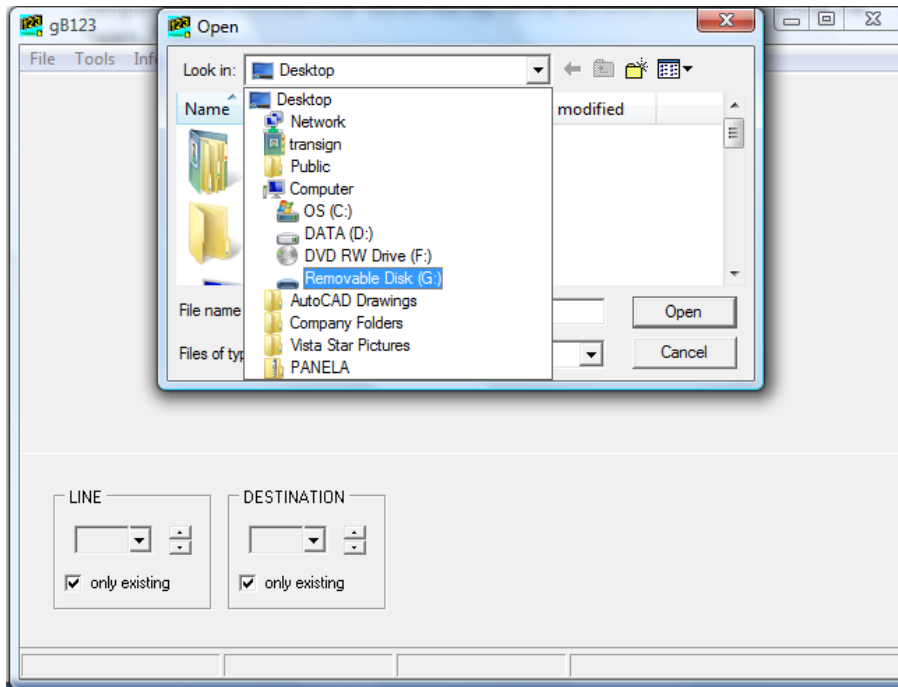
7. The first time you open this program on a new computer you need to go to "tools" then "options" to bring up the screen below and select BS230 for the equivalence option. This enables you to edit the equivalence that your control unit will read that directly corresponds to what the signs will display.



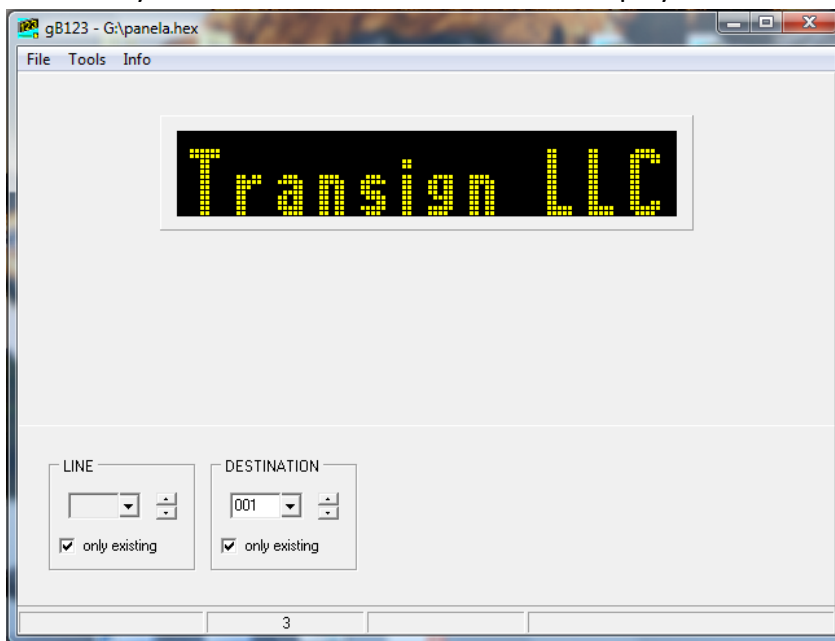
8. Select SET at the bottom of the screen to continue back to the main screen.
9. To open your current sign destinations you would first need to insert your USB Drive into your computer or into a card reader which is connected to the computer. Then click the “File” tab on the top left of this screen and then select the “open...” option.



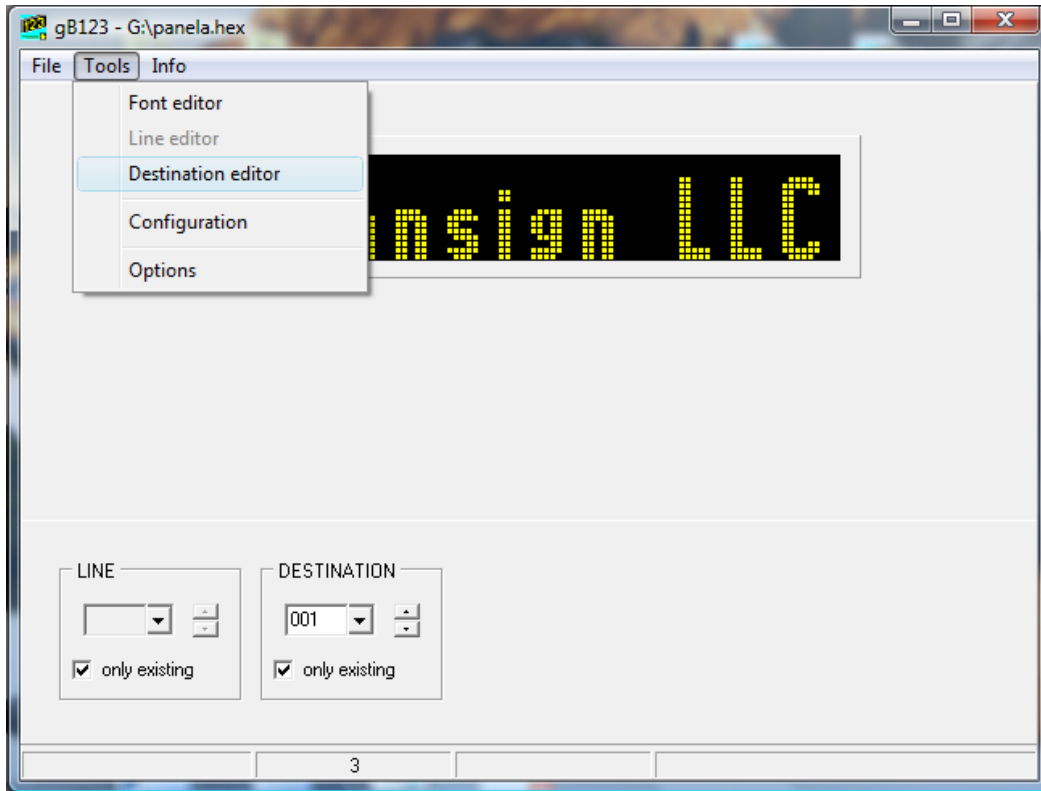
10. The Open screen will pop up and in the “Look in:” drop down menu find your removable disk which will either be drive (E:) or (G:). \*(If you wanted to start from scratch you would select your CD-ROM supplied and pick either the panela or panelb. More info starting on step 33.)



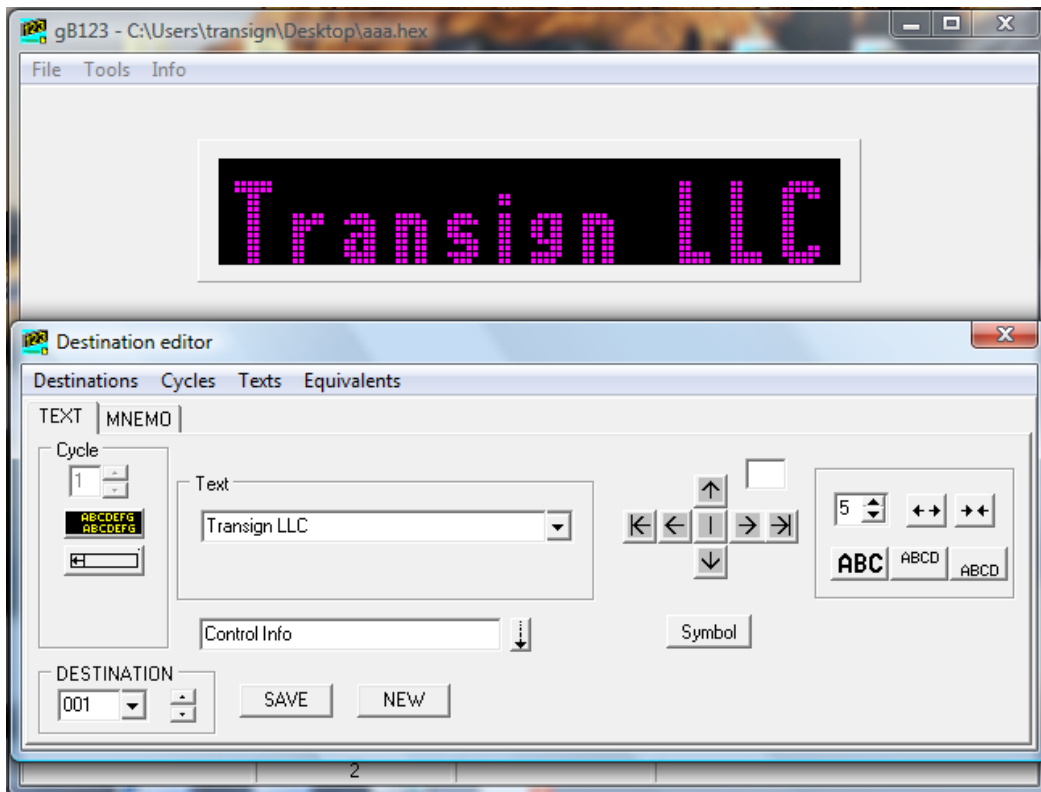
11. Depending on what signs you have will determine what files are located on your USB Drive. Panela will have the information for signs that are 16 pixels high and Panelb will be the information for the signs only 8 pixels high.
12. Click which one you want to edit and select Open. The screen will then open your files and show you what destination 001 is in the display.



13. To edit your current destinations you would select the "Tools" menu at the top left and pick "Destination editor" from your options.

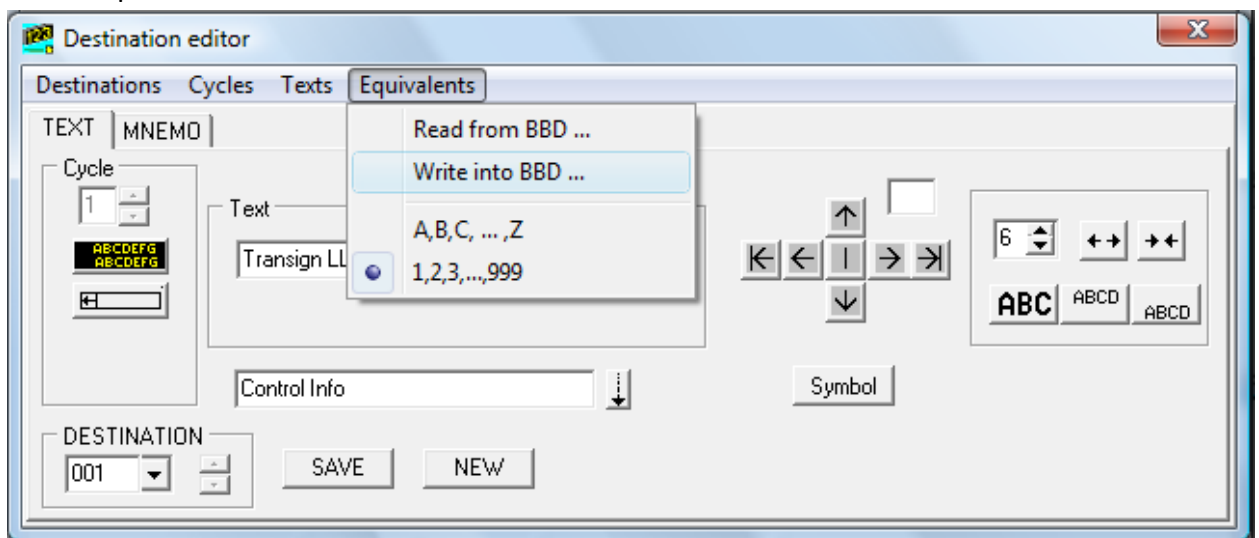


14. When selected the "Destination editor" screen will pop up.

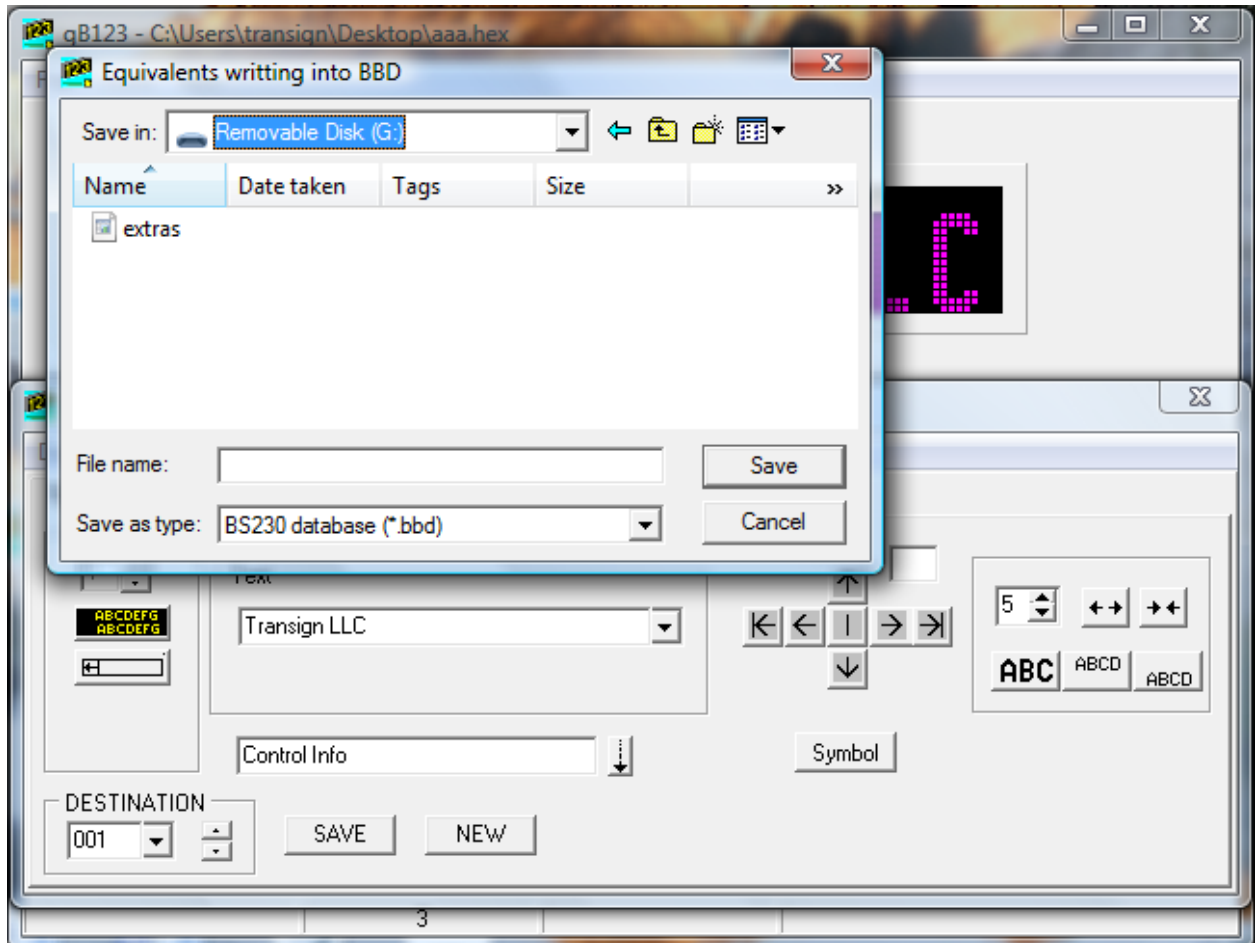


15. From here you are able to edit, change, and add new Destinations and Cycles to your destination.

16. At the far bottom left you will see the DESTINATION box with the number "001". You can use the arrows to the right of this to scroll through all destinations that are programmed with corresponding numbers and edit as needed.
17. Say you have 12 destinations and you want to add a 13<sup>th</sup> destination.
18. You would simply highlight where the destination number is and type "013" and press enter. (Be sure to hit enter on your keyboard to insure that the action is saved.)
19. You would then edit the text box, which in our example has "Transign LLC" which is the information displayed on your sign.
20. In order to have your controller display an equivalent name that represents the destination, you want to edit and type in the equivalent message to show up on the control panel. The box directly under the text box which in our example has "Control Info" displayed will be the message your driver will see on his/her controller. (If this display is not visible refer to number 7)
21. If the destination will not fit on one line and it is necessary for the sign to cycle between two or more lines, go to the "Cycle" tab at the top and select "add new cycle-behind" and then type the additional line or lines in the blank text field. (clicking the TEST button to the bottom right of the screen will show how this will mimic onto the sign.)
22. Click the "SAVE" button on the bottom before moving onto your next destination to keep all changes.
23. Once you have edited all of your destinations, you are ready to save to your USB Drive.
24. You will want to first select the "Equivalents" tab on the top of the Destination editor screen, make sure that the bullet point is on the 1,2,3...,999 and select the "Write into BBD..." option.

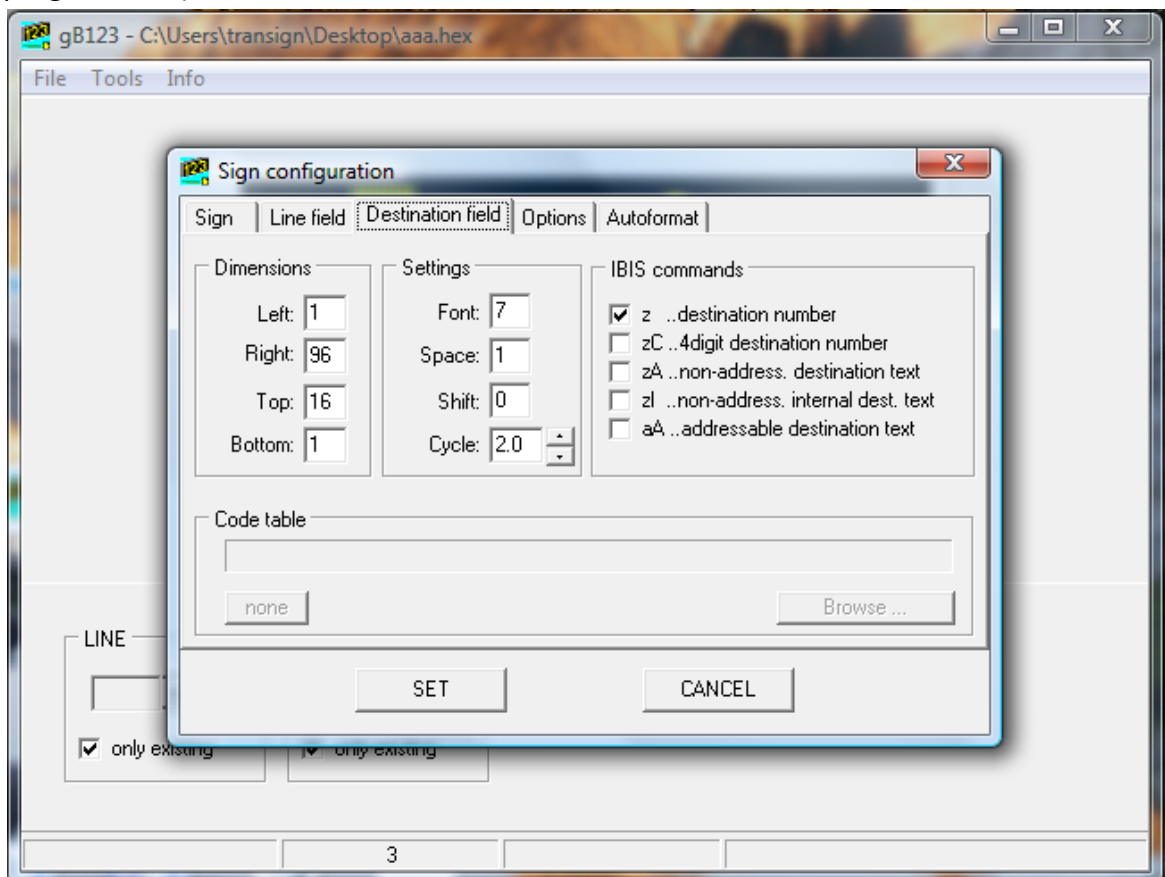


25. If there is a destination that the equivalent is not defined a pop up message will appear asking if you want to still write. We recommend that at this time you select NO and go through the destinations and check the equivalent controller information to determine which destination or destinations may be missing this information and type in what you would like the controller to display to the driver. (Remember you must click the SAVE button directly under the equivalent box in order for it to keep changes.) Then try again.
26. Use the "Save In:" drop down menu to locate your removable disk.
27. You will see a file named "extras." Click this item and select Save.



28. It will then bring up a caution that "File G:\extras.bbd exists. Overwrite it?" at this time you would select Yes. This saves the new writing in the control unit that the driver will see.
29. Now you want to Save the actual sign program.
30. You do this by selecting the "Destination" tab on the top left and clicking the "Close editor" option.
31. This will close the Destination Editor. Now select the "File" tab on the top left of the gB123 program window and select "save as."

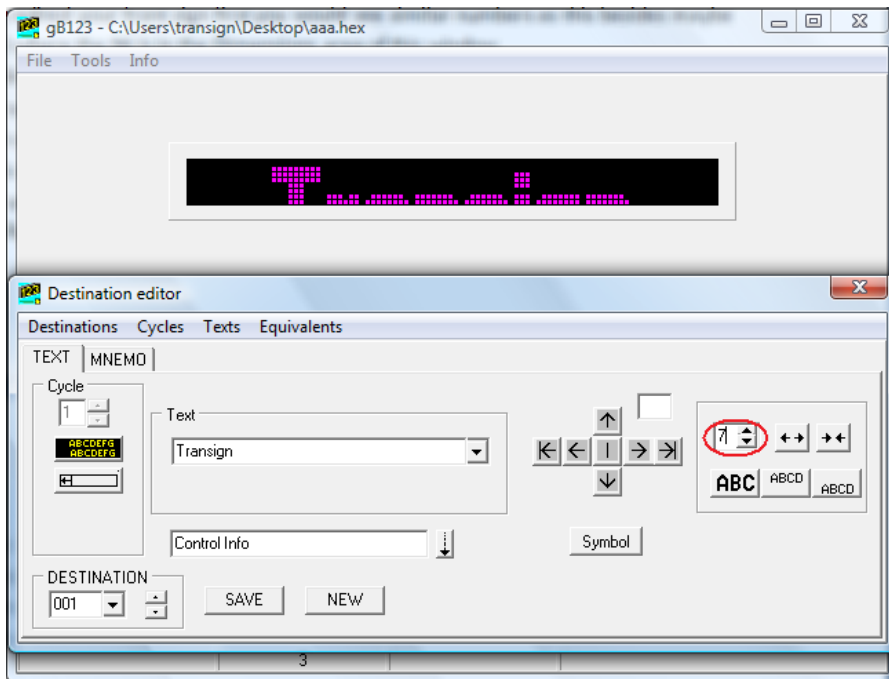
32. In the "Save in:" dropdown menu locate your removable disc once again. This will display either panela for the signs 16 pixels high, panelb for the signs 8 pixels high, or both depending on what you have. Select the panel that corresponds to the panel you have just edited and click save. Once again a caution will pop up asking if you want to overwrite the existing panel. Click Yes.
33. If you only have the one size sign you now have your new programming saved onto your USB Drive and are ready to go program your sign.
34. If you also have a side sign, that needs to be edited also. The fastest way to do this without having to retype all of your destinations once again is go into the "Tools" menu at the top of the gb123 program and click the "Configuration" tab. (You will need to make sure the Dimension field corresponds with the size of your LED sign to be programmed.)



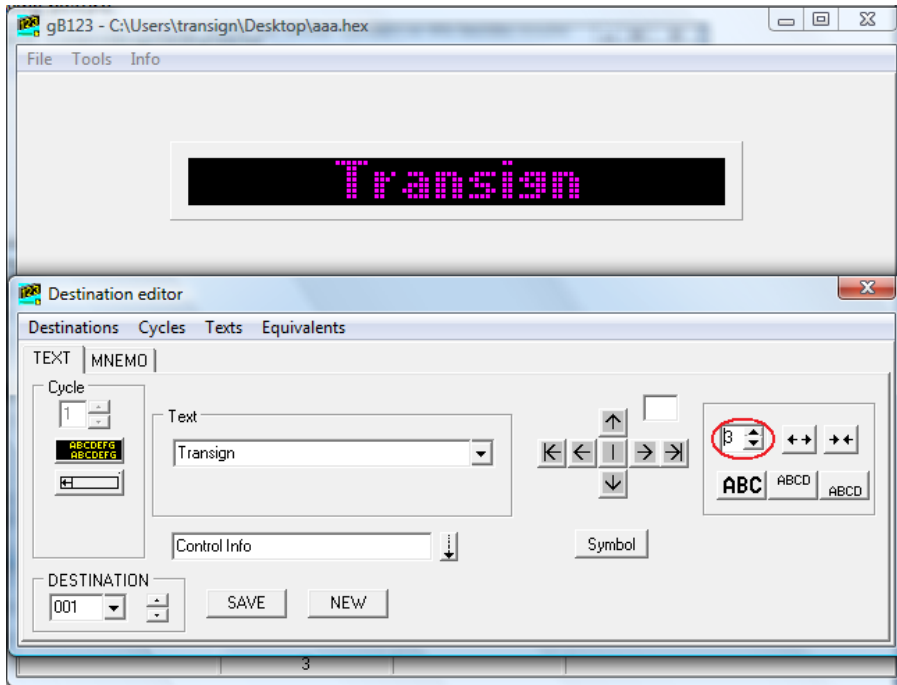
35. You would then select the third tab menu button at the top listing "Destination field."
36. If you edited your front sign first you would see similar numbers as above besides maybe an 80 where the 96 is in the Dimensions area of this window.
37. The dimensions tell the file, what area you are working with for your sign to be programmed.
38. Think of it as every pixel (LED) in your sign is numbered left to right and bottom to top.

This is showing that the LED sign is 96 pixels (LEDs) left to right and 16 pixels (LEDs) bottom to top.

39. Here you would change the numbers corresponding to the pixels (LEDs) on your other sign. Usually this would still be Right: 96 and the top changed to, Top: 8. Then click "SET."
40. If this is done right your writing will no longer fit correctly in the display windows of the new sign format dimensions.
41. Return to the destination editor by selecting the "Tools" tab and clicking the "Destination editor" option.
42. In this window you have the option to change the font size. Shown and circled in the following picture.

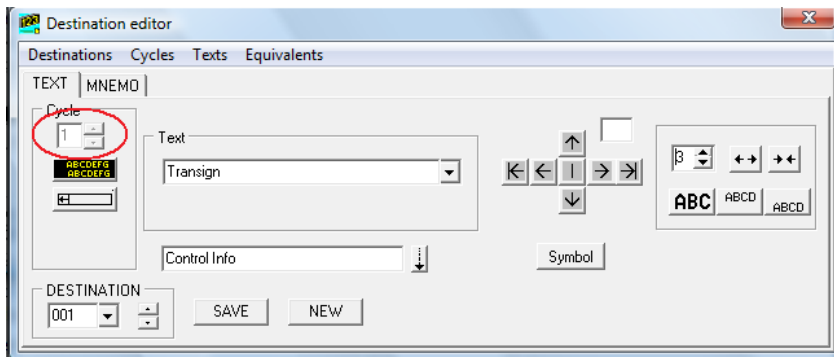


43. Use the arrows to the right of the seven to change the font size down or up to fit the sign. Scale #3 seems to be the best for the side signs and at most scale 8 for the front signs.



44. You would then have to do this for each of your destinations and any cycles that may be on any of your current destinations.

45. To view the cycles in a destination you would click the arrows to the right of the Cycle number.



46. It is not necessary to change the Equivalents tab or Save into BBD this time because the information for your controller has been saved and will view the same for both signs.

47. So after you get all of your lettering to fit onto the new sign dimensions you would then click the "Destinations" tab and select close editor.

48. From here you would click the "File" tab on the gB123 program window and select "save as..." again.

49. This time when you locate your removable disk in the drop down menu for "Save in," you would select the opposite panel as you did before. [remember Panela is signs 16 pixels (LEDs) high and Panelb is for the signs 8 pixels (LEDs) high.]

50. You are now ready to program your signs.

\*51) We have recently updated our system. The only major change is that the screen may look slightly different as now we have the update to scroll right to left on the LED boards. The view below is the new updated version and shows the button to click to activate the scrolling on the screen (circled in red). Everything else in this manual stays and works as is.

